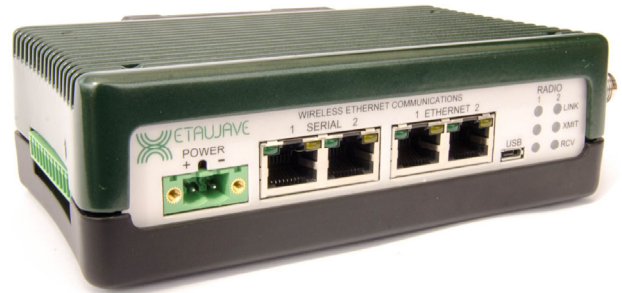


400 MHz FCC/IC Ethernet Software Defined Industrial Radio

The **Xeta4 Ethernet radio** is an extremely capable and flexible industrial software defined radio. The **Xeta4** Ethernet radio is offered with an option to include 8 programmable inputs and outputs. The **Xeta4** is based on the XetaWave patent pending **Dual Decode Digital Architecture™** that offers significant receiver performance.

The **Xeta4** supports multiple modulation schemes and features that can selectively switch to achieve optimal data throughput given the available channel size and environmental noise.



MultiSpeed MultiPoint™ mode enables Endpoints operating at different over-the-air data transfer rates to communicate with an Access Point over the same network. The new **Enhanced MultiPoint, XetaEMP**, mode provides an increase in throughput and decreased in latency over our standard modes and against competitive products.

Key Features

High Speed Over-the-air data transfer rates from 5 kbps to 91 kbps and increased throughput with the **XetaEMP** mode.

Selective Modulation Multiple MSK, PSK, and QAM modulations.

Dual Mode Duplex and single channel operations.

Network Types Point to Point, Point to MultiPoint, CSMA peer to peer, Enhanced MultiPoint, and 4710 A and B.

Adjustable RF Output 50 mW to 8 Watts (+17 to +39 dBm) RF output.

Secure Over-the-air data encryption using 128-bit and 256-bit AES.

MultiSpeed Multipoint Access Points communicate with Endpoints operating at different RF Data Rates.

XetaEMP New protocol with increased throughput and decreased latency.

Xeta4 Specifications

Transmitter

| | |
|---------------------|--|
| Frequency Range | 406 to 430 & 450 to 470 MHz |
| RF Output Power | 0.50 to 8 Watts |
| Modulation | MSK, QPSK, 8PSK, 16QAM 32QAM, 64QAM |
| RF Data Rate | 5 kbps to 91 kbps |
| Occupied Bandwidth | 6.25, 12.5, 25 & 50 kHz |
| Frequency Stability | 1.0 ppm |

Receiver

| Channel Size | Sensitivity | Data Rate | Modulation |
|--------------|-------------|-----------|------------|
| 6.25 kHz | -112 dBm | 5 kbps | MSK |
| | -115 dBm | 10 kbps | MSK |
| | -104 dBm | 20 kbps | QPSK |
| 12.5 kHz | -100 dBm | 31 kbps | 8PSK |
| | -95 dBm | 41 kbps | 16QAM |
| | -91 dBm | 51 kbps | 32QAM |
| | -90 dBm | 61 kbps | 64QAM |
| 25 kHz | -114 dBm | 18 kbps | MSK |
| | -107 dBm | 29 kbps | QPSK |
| | -101 dBm | 44 kbps | 8PSK |
| | -98 dBm | 59 kbps | 16QAM |
| | -95 dBm | 76 kbps | 32QAM |
| | -89 dBm | 91 kbps | 64QAM |

50 kHz also available

Data Transmission

| | |
|---------------------|---|
| Data Interface | Ethernet & RS232/422/485 Serial |
| Data Connector | RJ45 (2 Ethernet & 2 Serial) |
| Data Interface Rate | 10/100 Mbps (Ethernet) Up to 230.4 kbps (Serial) |
| Data Encryption | 128 & 256-bit AES |
| Error Handling | CRC, FEC, Retransmit on error |
| Error Correction | Goley, Small Block, Reed-Solomon |
| RF Connector | TNC / 50 Ohms |

Networking

| | |
|------------|---|
| Protocols | TCP, UDP, ARP, DHCP, NTP, FTP, ICMP, HTTP, & HTTPS |
| Management | Web GUI, SNMP v1, v2, & v3 |
| Serial | TCP/UDP Server, TCP Client, |
| VLAN | 802.1q VLANs and trunks |
| Features | IP Routing, Net Filter, NAT, Port Forwarding, Modbus TCP/RTU Bridging, Data Concentrator, PLC, Wire Replacement, XetaEMP |

Power

| | |
|------------------|------------------|
| Input Voltage | +12 to +32 Vdc |
| Transmit Current | 2.6 A @ +12 Vdc |
| Receive Current | 300 mA @ +12 Vdc |
| Power Connector | 2-pin Phoenix |

Environmental / Physical

| | |
|-----------------|-----------------------------------|
| Op. Temperature | -40°C to +75°C |
| Humidity | 95% @ +40°C non-condensing |
| Safety | UL Class 1 Div 2 |
| Dimensions | 6.62" x 3.45" x 1.83" (L x W x H) |
| Weight | 700 grams |

Ordering (other variants available)

| | |
|------------------|--|
| XETA4-22MMLFA | Metal Enclosed, 2 Ethernet & 2 Serial, Linux |
| XETA4-22MMLFA-IO | Metal Enclosed, 2 Ethernet & 2 Serial, 8 IO, Linux |
| XETA4-10MMNFB | Metal Enclosed, 1 Serial, 4710 A&B Compatible |

