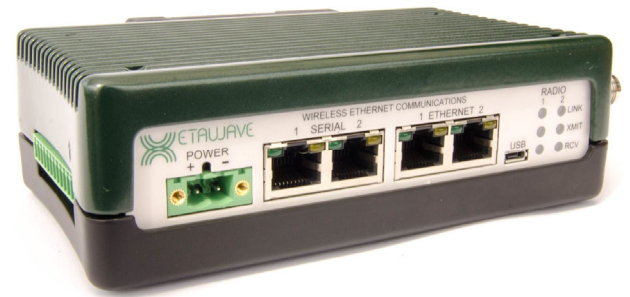


Software Defined Industrial Radio

The XetaWave extremely capable, flexible, and low cost industrial software defined radio (SDR) is available in a dual configuration. Create a dual radio with each operating in the same frequency band or in totally different bands.

Any of our RF modules ranging from 100 MHz to 2.4 GHz can be combined together creating a dual channel radio. Each radio complies with its original specifications and supports all of its existing features.



The dual radio can be configured as a back-to-back repeater reducing cost, weight, and power consumption while also eliminating cables. The dual radio can be used to bridge between two different frequency bands or bridge between two networks.

Key Features

Performance All features and specifications of the single version radio supported.

Wide Selection Frequency selections in the 100, 200, 400, 700, 900, 1400, and 2400 MHz bands.

Secure Over-the-air data encryption using 128-bit and 256-bit AES.

Adjustable RF Output RF output power for each radio module is user controlled.

Network Types Point to Point, Point to Multipoint, CSMA Peer to Peer, Enhanced Multipoint, XetaMESH.

Repeater Units can be configured as back-to-back repeaters eliminating extra boxes and cabling between them.

Dual Band Options

Xetawave has the ability to put any combination of RF modules together to create dual band radios with and without programmable input/output. The list below identifies existing models. Please contact us for the availability of other models and combinations.

Model	OS	Band 1	Band 2
XETA1X1-22MMLFA	Linux	136-174 MHz	136-174 MHz
XETA2X2-22MMLFB	Linux	217-222 MHz	217-222 MHz
XETA2X2-22MMLFB-IO	Linux	217-222 MHz	217-222 MHz
XETA2X2-22MMUFB	uTasker	217-222 MHz	217-222 MHz
XETA4X4-22MMLFB	Linux	406-430/450-470 MHz	406-430/450-470 MHz
XETA4X4-22MMLFB-IO	Linux	406-430/450-470 MHz	406-430/450-470 MHz
XETA4X4-22MMUFB	uTasker	406-430/450-470 MHz	406-430/450-470 MHz
XETA4X4-22MMUFB-IO	uTasker	406-430/450-470 MHz	406-430/450-470 MHz
XETA4BX4B-22MMLFA	Linux	450-470 MHz	450-470 MHz
XETA4BX4B-22MMLFA-IO	Linux	450-470 MHz	450-470 MHz
XETA7X7-22MMLFB	Linux	757-758/787-788 MHz	757-758/787-788 MHz
XETA7X7-22MMLFB-IO	Linux	757-758/787-788 MHz	757-758/787-788 MHz
XETA9X9-22DMLFC	Linux	902-928/928-960 MHz	902-928/928-960 MHz
XETA9X9-22DMLFC-IO	Linux	902-928/928-960 MHz	902-928/928-960 MHz
XETA9X9-22DMUFC	uTasker	902-928/928-960 MHz	902-928/928-960 MHz
XETA9X9-22DMUFC-IO	uTasker	902-928/928-960 MHz	902-928/928-960 MHz
XETA14X14-22MMLFA	Linux	1.427-1.432 GHz	1.427-1.432 GHz
XETA14X14-22MMLFA-IO	Linux	1.427-1.432 GHz	1.427-1.432 GHz
XETA24X24-22IMLFA	Linux	2.402-2.478 GHz	2.402-2.478 GHz
XETA24X24-22IMLFA-IO	Linux	2.402-2.478 GHz	2.402-2.478 GHz
XETA24X24-22IMUFA	uTasker	2.402-2.478 GHz	2.402-2.478 GHz
XETA24X24-22IMUFA-IO	uTasker	2.402-2.478 GHz	2.402-2.478 GHz
XETA9X4-22DMLFC	Linux	902-928/928-960 MHz	406-430/450-470 MHz
XETA9X4B-22DMLFC	Linux	902-928/928-960 MHz	450-470 MHz
XETA9X24-22DMLFC	Linux	902-928/928-960 MHz	2.402-2.478 GHz

Environmental / Physical

Operating Temperature -40°C to +60°C (MAS)/+75°C (ISM)

Humidity 95% @ +40°C non-condensing

Safety UL Class 1 Div 2

Dimensions 6.62" x 3.45" x 1.83" (L x W x H)

Weight 700 grams

